

Descriptive Analysis of Pilocytic Astrocytomas using SEER 13 registry (1992-2002) and SEER 9 registry (1973-2002) data

Bridget J. McCarthy, Ph. D.
Central Brain Tumor Registry of the United States

Pilocytic Astrocytoma Statistics

Surveillance, Epidemiology, and End Results Data

Selection: Histology = 9421 (**Pilocytic astrocytoma**)
 Primary site = C70.0-72.9 and C75.1-75.3 (**All brain and CNS site codes**)

Table 1. Annual percent change and incidence rates/100,000 person-years from the SEER 13 registry (1992-2002) data set by gender and race, age-adjusted to the 2000 US standard population.

	1992-2002 (13 registries)	
	N	Rate/Trend (95% CI)
Overall Incidence	1187	0.279 (.263-.296)
1992-2002 Annual Percent Change (APC)		3.8 (2.2-5.4)*
Gender:		
Male	609	0.283 (.261-.307)
Female	578	0.276 (.254-.299)
Age at Diagnosis:		
0-14 years	693	0.750 (.695-.808)
< 20 years	817	0.671 (.626-.719)
20+ years	370	0.121 (.109-.135)
Race:		
Caucasian	992	0.311 (.292-.331)
African American	97	0.179 (.145-.222)
Asian/Pacific Islander	78	0.173 (.136-.219)

*The APC is significantly different from zero (p<0.05).

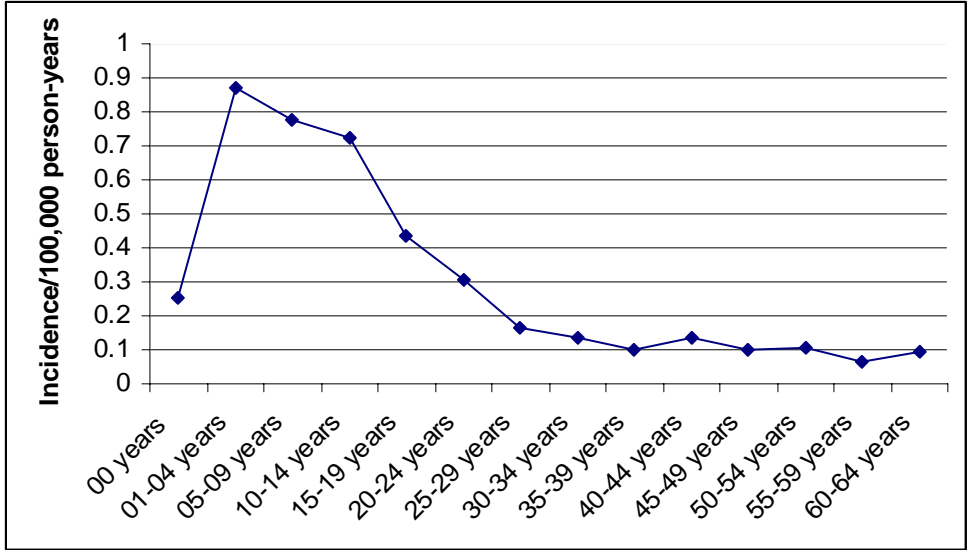


Figure 1. Incidence rates for all pilocytic astrocytoma by age at diagnosis; SEER 1992-2002, 13 registries.

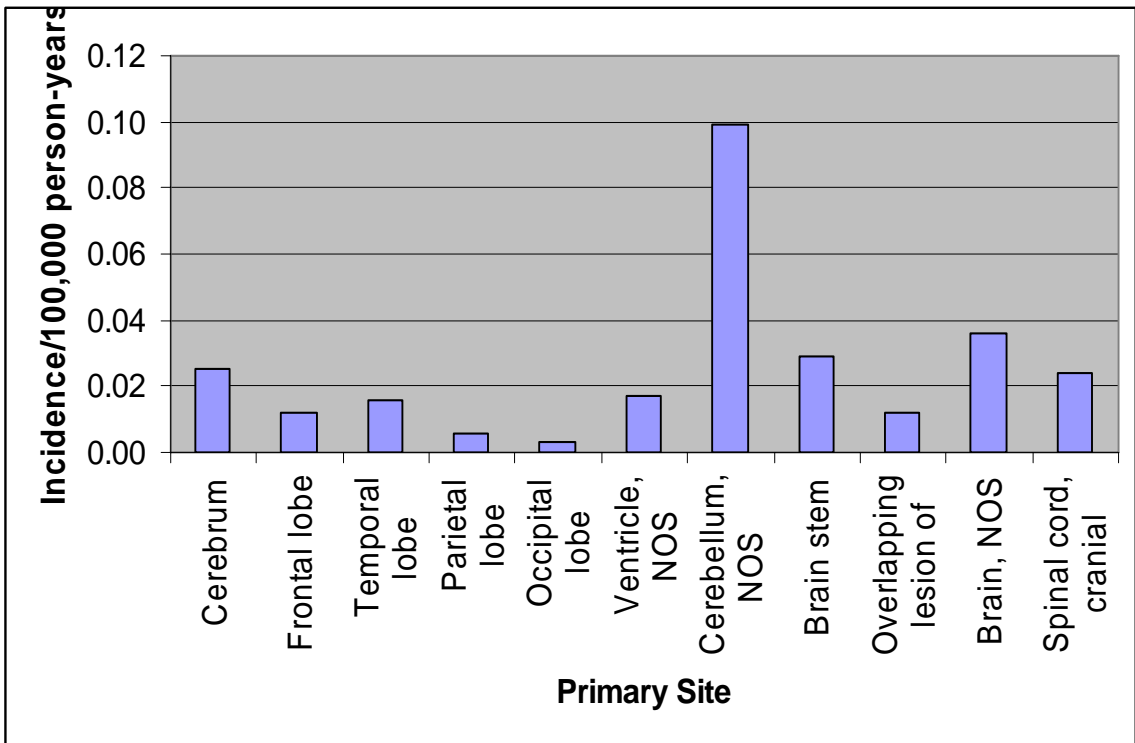


Figure 2. Incidence rates for all pilocytic astrocytoma by primary site code and age-adjusted to the 2000 US standard population; SEER 1992-2002, 13 registries.

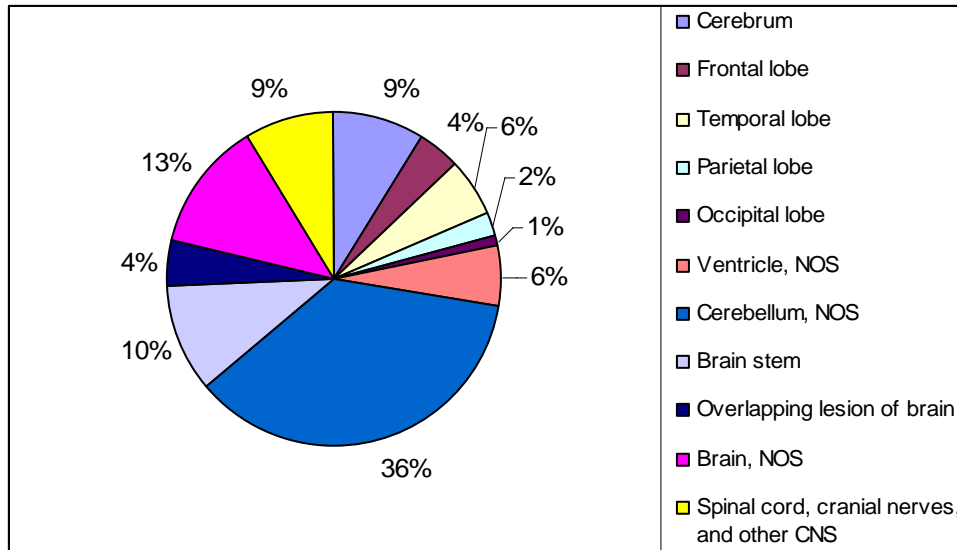


Figure 3. Percent of all pilocytic astrocytoma by primary site code; SEER 1992-2002, 13 registries.

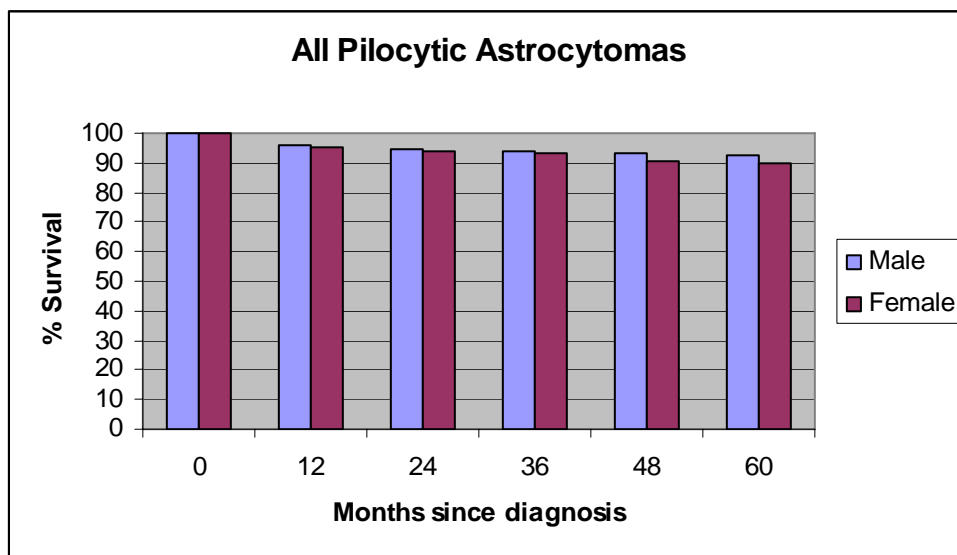


Figure 4. Relative survival rates for all pilocytic astrocytoma by gender; SEER 1973-2002, 9 registries.

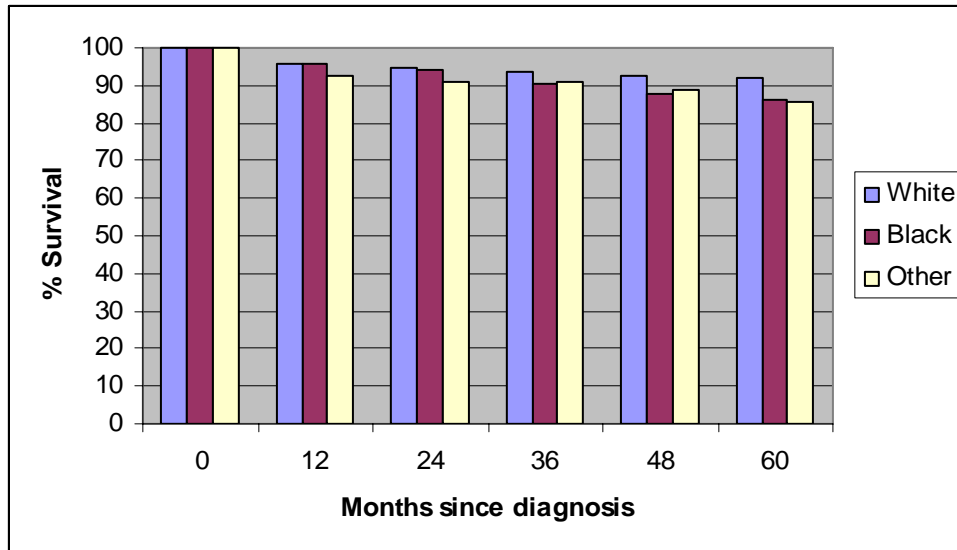


Figure 5. Relative survival rates for all pilocytic astrocytoma by race; SEER 1973-2002, 9 registries.

- No significant differences between the three groups.